

# Deluxe Rural Mailboxes

## DELUXE RURAL MAILBOXES U.S.P.S. APPROVED

Made entirely of aluminum, Salsbury U.S.P.S. approved 4800 series deluxe rural mailboxes feature a 1/8" thick extruded aluminum body and a 1/8" thick die cast aluminum front door and rear cover. Deluxe rural mailboxes also feature a durable textured powder coated finish available in two (2) colors and include an adjustable burgundy signal flag and a magnetic door catch. A full width stainless steel hinge attaches the die cast door to the body allowing for smooth operation. Deluxe rural mailboxes and optional matching deluxe newspaper holders can be mounted on standard, classic, decorative or deluxe mailbox posts, spreaders or a base of your choice. Deluxe rural mailboxes are approved for U.S.P.S. curbside mail delivery.

### Featuring an Elegant Textured Finish!



(2) #4850-D's on a 2-sided deluxe post (#4872) displayed.



#### DESCRIPTION

4850D<sup>1</sup> - Deluxe Rural Mailbox

4850D

#### UNIT SIZE

7-1/2" W x 9-1/2" H x 20-1/2" D

#### WEIGHT

15 lbs.

#### PRICE

\$125.00

#### DESCRIPTION

4815D<sup>1</sup> - Newspaper Holder

#### UNIT SIZE

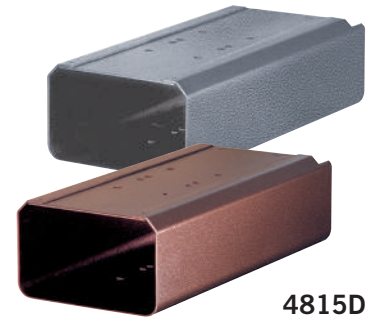
7-1/4" W x 4-1/2" H x 16" D

#### WEIGHT

10 lbs.

#### PRICE

\$65.00



4815D

<sup>1</sup> Specify



pewter



mocha

#### REPLACEMENT FLAGS

Made of heavy duty 1/4" thick die cast aluminum, deluxe mailbox replacement signal flags have a durable powder coated burgundy finish and easily attach to deluxe rural mailboxes. Mailbox flags include stainless steel mounting hardware.

#### 4816D - Replacement Flag

- 2-3/4" W x 8" H x 1/4" D
- 1 lb.
- \$10.00



4816D

